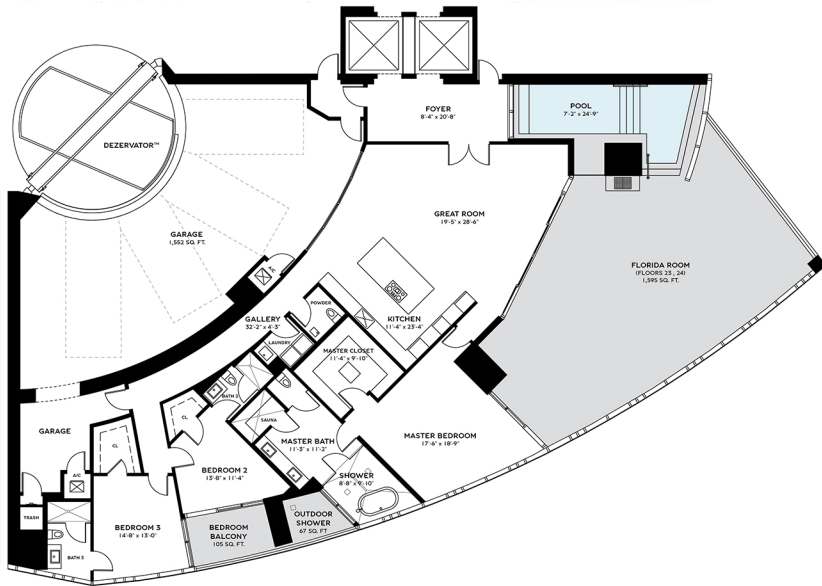




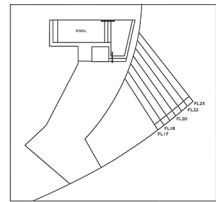
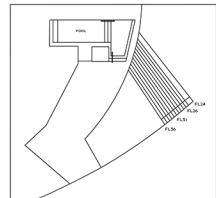
B
BENTLEY
RESIDENCES



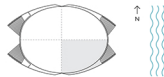
RESIDENCE AZURE
3 BEDS | 3.5 BATHS

FLOORS 23, 24

INTERIOR	3,014 SQ. FT.	919 SQ. M.
BALCONY	1,767 SQ. FT.	538 SQ. M.
GARAGE	1,552 SQ. FT.	473 SQ. M.
TOTAL	6,333 SQ. FT.	1,930 SQ. M.



TERRACE AREA VARIES BY FLOOR



LEGAL REPRESENTATIONS CANNOT BE RELIED UPON AS CORRECTLY STATING THE REPRESENTATIONS OF THE DEVELOPER. FOR CORRECT REPRESENTATIONS, MAKE REFERENCE TO THIS BROCHURE AND TO THE DOCUMENTS REQUIRED BY SECTION 718.05, FLORIDA STATUTE, TO BE FURNISHED BY A DEVELOPER TO A BUYER OR LESSEE.

Stated square footages and dimensions are measured to the exterior boundaries of the exterior walls and the exterior of interior dividing walls and in feet vary from the square footages and dimensions that would be determined by using the description and definition of the "foot" set forth in the Deizeraplan (which generally only includes the exterior angles between the perimeter walls and excludes all interior structural components and other common elements). This method is generally used in sales materials and is provided to allow a progressive buyer to compare the Units with units in other condominium projects that utilize the same method. Measurements of rooms set forth on this floor plan are generally taken at the furthest points of each given room (as if the room were a perfect rectangle), without regard for any rooms or variations. Accordingly, the area of the actual room will typically be smaller than the product

obtained by multiplying the stated length and width. All dimensions are estimates which will vary with actual construction, and all floor plans, specifications and other development plans are subject to change and will not necessarily accurately reflect the final plans and specifications for the development. All dimensions of appliances, counters, sinks, toilets, floor covering and other matters of detail, including, without limitation, items of finish and accessories are conventional only and are not necessarily included in each Unit.

