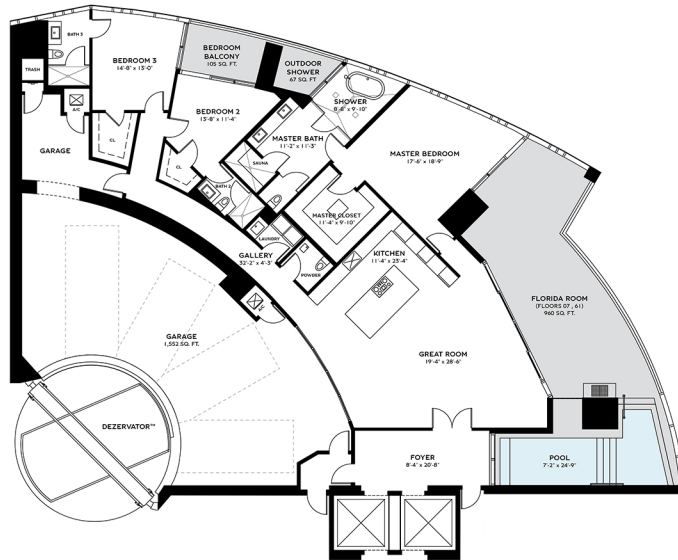


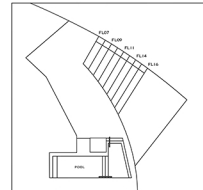
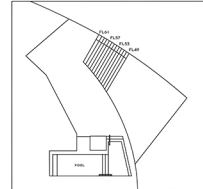


**BENTLEY
RESIDENCES**

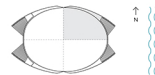


RESIDENCE ARNAGE
3 BEDS | 3.5 BATHS
FLOORS 07, 61

INTERIOR	3,014 SQ. FT.	919 SQ. M.
BALCONY	1,132 SQ. FT.	345 SQ. M.
GARAGE	1,552 SQ. FT.	473 SQ. M.
TOTAL	5,698 SQ. FT.	1,737 SQ. M.



TERRACE AREA VARIES BY FLOOR



ORAL REPRESENTATIONS CANNOT BE RELIED UPON AS CORRECTLY STATING THE REPRESENTATIONS OF THE DEVELOPER. FOR CORRECT REPRESENTATIONS, PLEASE REFERENCE TO THIS BROCHURE AND TO THE DOCUMENTS REQUIRED BY SECTION 718.05, FLORIDA STATUTES, TO BE FURNISHED BY A DEVELOPER TO A BUYER OR LESSEE.

Ground surface topography and dimensions are based on the vertical boundaries of the project, walls and the centerline of major driveway walls and in feet vary from the square footage and dimensions that would be determined by the actual construction. The actual construction shall generally only include the exterior surfaces between walls and include all interior structural components and other common elements. This brochure is generally used to assist in the selection of a particular floor to compare the floor with units in other construction projects that utilize the same model. Measurements of rooms on this floor plan are given by taking at the furthest points of each given room (in the room with a garburator, without regard for any columns or obstacles). Accordingly, the area of the actual room will typically be smaller than the product

obtained by multiplying the stated length and width. All dimensions are approximate which will vary with actual construction, and all floor plans, specifications and other development plans are subject to change and will not necessarily accurately reflect the final plans and specifications for the development. All depictions of appliances, counters, toilets, sinks, floor coverings and other matters of detail, including, without limitation, items of finish and decoration, are conceptual only and are not necessarily included in each unit.

DEZER